

Our cheesemould is the answer to your cheese production process!

KADOVA[®] CHEESE MOULDS

Cheesemoulds ideally suited for use in fully automated production processes as well as in a manual traditional way of cheese making.

CYLINDRICAL



Moulds available in the range of 200g up to 1000g



Characteristics

- ▶ smooth surface – giving optimal cleaning characteristics
- ▶ lightweight
- ▶ resistant to processing temperatures
- ▶ long life / virtually unbreakable
- ▶ do not deform due to pressure

Components

KADOVA cheesemoulds consist of four standard parts:

- ▶ Lid - injection moulded part made in one piece
- ▶ Lid net - injection moulded part with pre-formed mesh
- ▶ Mould net - injection moulded part with pre-formed mesh
- ▶ Mould - injection moulded part made in one piece

Materials

Our cheesemoulds are manufactured from FDA - approved Polythene resin with the following properties:

- ▶ Chemical and moisture resistant
- ▶ Tough and tenacious
- ▶ Suitable for contact with food and dairy

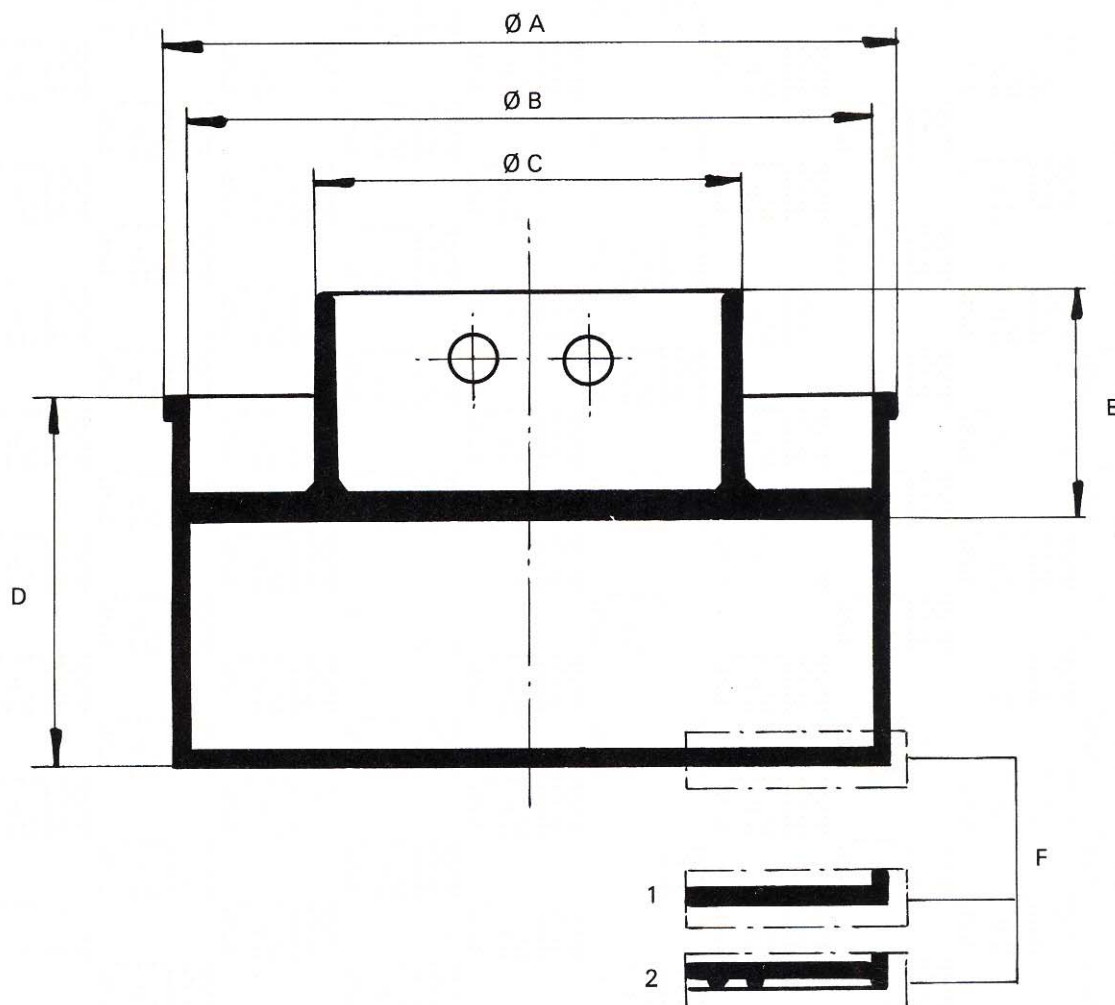
Why choose for KADOVA cheesemoulds?

- ▶ Dry and smooth rind
- ▶ Attractive shape
- ▶ Higher daily capacity due to reduced pressing time
- ▶ Low investment since mould can be used several times per day

Sonoco Crellin has been serving food industry for over 40 years. Crellin's cheesemoulds division has been developing and producing cheesemoulds, (multimoulds) and ripening nets including our patented KADOVA and KAPERVA cheesemoulds. KADOVA cheesemoulds are used in small cheese factories as well as in larger, fully automated operations. The wide range of our injection moulded cheese moulds/ products is renowned for its reliability.

For more than 50 years Sonoco Crellin BV is focussing on precision / accuracy injection moulding, assembly, printing and automated packaging of high quality thermoplastic products and components for the international market. All products are produced to the highest standards of quality according to TQM, ISO 9001 and ISO 14001.

Sonoco Crellin, with 15 production facilities located worldwide, is the plastic moulding division of Sonoco Products Company in the USA and is global leader in packaging with 275 operations in 32 countries.



CYLINDRICAL

Code	Type	A	B	C	D	E	F
4390	Cyl. Ø 130	144	130	84	126	70	1
4480	Cyl. Ø 225	260	225	163	78	61	2
4490	Cyl. Ø 240	273	240	179	122	78	2
4500	Cyl. Ø 256	305	256	179	142	57	1
4510	Cyl. Ø 256	305	256	179	181	72	1
4530	Cyl. Ø 310	350	310	208	230	157	1
4540	Cyl. Ø 350	396	350	205	233	118	1
4550	Cyl. Ø 375	413	375	221	157	93	1
4560	Cyl. Ø 375	413	375	221	195	106	2
4570	Cyl. Ø 400	472	400	203	235	120	1