

Our cheesemould is the answer to your cheese production process!

KADOVA[®] CHEESE MOULDS

Cheesemoulds ideally suited for use in fully automated production processes as well as in a manual traditional way of cheese making.

TOMME, St. PAULIN, MANCHEGO



Moulds available in the range of 200g up to 1000g



Characteristics

- smooth surface – giving optimal cleaning characteristics
- lightweight
- resistant to processing temperatures
- long life / virtually unbreakable
- do not deform due to pressure

Components

KADOVA cheesemoulds consist of four standard parts:

- | | |
|-------------|---|
| ▸ Lid | - injection moulded part made in one piece |
| ▸ Lid net | - injection moulded part with pre-formed mesh |
| ▸ Mould net | - injection moulded part with pre-formed mesh |
| ▸ Mould | - injection moulded part made in one piece |

Materials

Our cheesemoulds are manufactured from FDA - approved Polythene resin with the following properties:

- Chemical and moisture resistant
- Tough and tenacious
- Suitable for contact with food and dairy

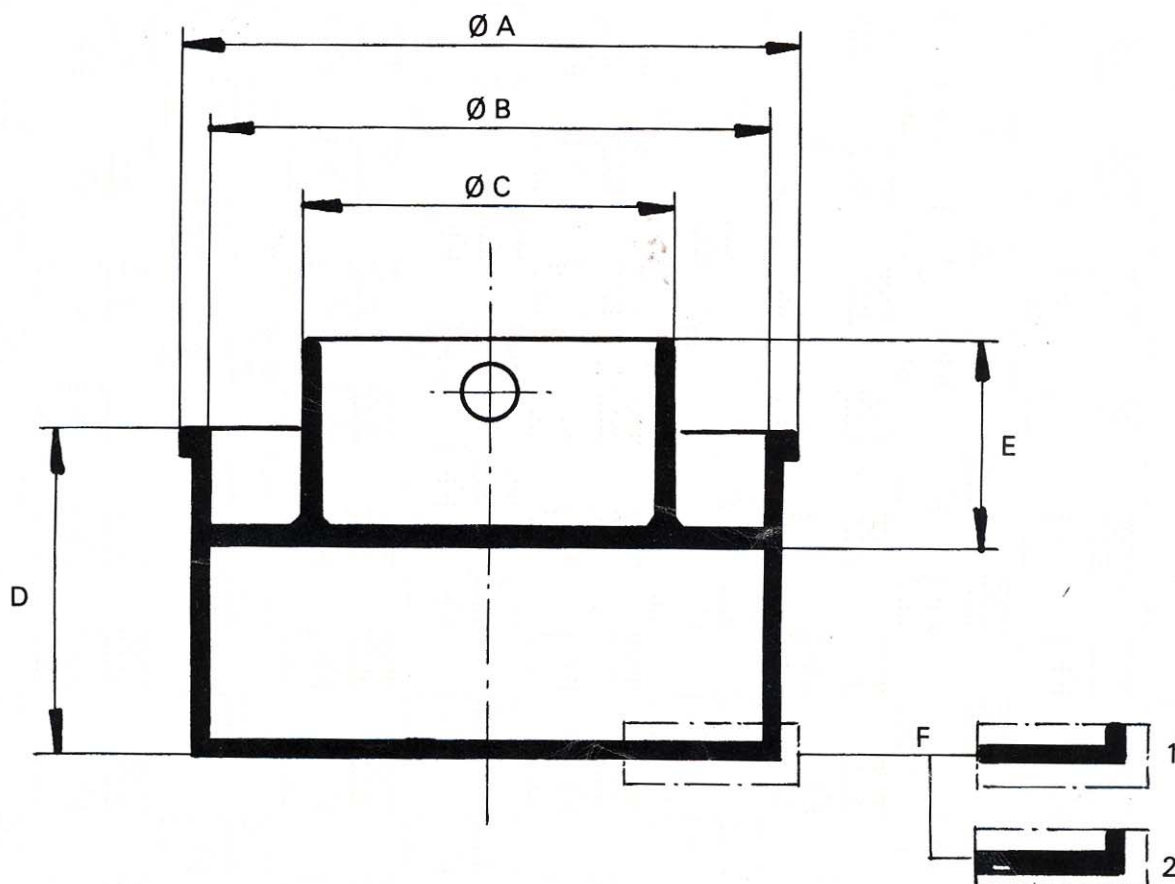
Why choose for KADOVA cheesemoulds?

- Dry and smooth rind
- Attractive shape
- Higher daily capacity due to reduced pressing time
- Low investment since mould can be used several times per day

Sonoco Crellin has been serving food industry for over 40 years. Crellin's cheesemoulds division has been developing and producing cheesemoulds, (multimoulds) and ripening nets including our patented KADOVA and KAPERVA cheesemoulds. KADOVA cheesemoulds are used in small cheese factories as well as in larger, fully automated operations. The wide range of our injection moulded cheese moulds/ products is renowned for its reliability.

For more than 50 years Sonoco Crellin BV is focussing on precision / accuracy injection moulding, assembly, printing and automated packaging of high quality thermoplastic products and components for the international market. All products are produced to the highest standards of quality according to TQM, ISO 9001 and ISO 14001.

Sonoco Crellin, with 15 production facilities located worldwide, is the plastic moulding division of Sonoco Products Company in the USA and is global leader in packaging with 275 operations in 32 countries.



TOMME, St. PAULIN, MANCHEGO

Code	Type	A	B	C	D	E	F
4350	Tomme Ø 83	113	83	50	76	51	2
4360	Tomme Ø 105	135	105	76	95	62	2
4370	Tomme Ø 120	150	120	76	76	59	1
4380	Tomme Ø 130	159	130	84	76	70	1
4410	Tomme Ø 180	214	180	98	116	74	1
4420	St. Paulin Ø 193	225	193	98	98	62	1
4430	St. Paulin Ø 200	226	200	98	112	62	1
4440	St. Paulin Ø 210	243	210	98	114	74	1
4460	Manchego Ø 210	243	210	98	145	74	1